

ATTENTION FOCAL



## ► 石家庄瑞特泵业有限公司

石家庄瑞特泵业有限公司是集渣浆泵研发、设计、生产、销售为一体的高新技术企业。本公司成立于2003年，拥有铸造、热处理、机械加工、装备完整独立的渣浆泵生产线，坚持诚信至上、以质取胜、追求卓越、勇于创新的企业理念，为客户提供优质的产品和满意的服务。

石家庄瑞特泵业有限公司位于石家庄高新技术开发区，建筑面积3万多平方米，注册资金5000万，主要为矿山、冶金、市政、电力、煤炭、疏浚、火电烟气脱硫、石油、化工、建材、造纸、制药等行业提供配套用泵。产品行销全国各省、市、自治区以外，还远销俄罗斯、南非、菲律宾、澳大利亚、印度等20多个国家和地区，专业的售前、售中、售后服务，优质的产品质量赢得了国内外客户的一致认可。

公司采用先进的计算机辅助设计软件进行产品和工艺设计，设计手段和设计水平达到国际先进水平。年产高铬合金铸件5000吨，整泵6000台。主营产品为AH(R)、M(R)、HH、L、G、SP(R)、F、ZGB、ZJ、YTZ、ZBD、DT、TL、LC等型渣浆泵。口径范围为25-1200mm，流量为5-30000m<sup>3</sup>/h，扬程为5-110m。公司产品的主要材质包括高铬耐磨白口铸铁、低碳高铬耐磨耐腐蚀合金、碳钢、不锈钢、双相不锈钢、球磨铸铁、灰铸铁等，还可提供模压天然橡胶、合成橡胶材质的零件和整机。

除上述已有产品外，我公司承接来图来样定制加工服务(OEM)，目前已与国外多家公司合作，为国际知名公司提供耐磨铸件。

瑞特泵业通过不断的技术创新为广大客户提供更加优质的产品，通过不断的管理创新为广大客户提供更加便捷的服务，最大限度满足客户的需求。

公司严格执行全面质量管理体系，并已通过ISO9001:2008GB/T19001-2008质量管理体系认证。

## ► SHIJIAZHUANG RUI TE PUMP CO., LTD.

Shijiazhuang Ruite Pump Co., Ltd. is a high and new technology enterprise which integrates the research and development, design, production and sales of the slurry pump. With the registered capital of 50 million, The company was founded in 2003, and has a complete production line of casting, heat treatment, mechanical processing and equipment. It sticks to the business philosophy of "honesty first, quality win, pursuit of excellence and innovation" to provide customers with quality products and satisfying services.

Shijiazhuang Ruite Pump Co., Ltd. is located in high tech Development Zone of Shijiazhuang and cover more than 30 thousand square meters. We mainly support the pumps for mining, metallurgy, municipal, electricity, coal, dredging, flue gas desulfurization of thermal power, petroleum, chemical industry, building materials, paper, pharmaceutical and other industries. The products is popular at home and abroad. Our foreign customers are from more than 20 countries and regions, including Russia, South Africa, Philippines, Australia, India, etc., The professional pre-sale, sale, after sale services and quality products have won the unanimous recognition from domestic and foreign customers.

With advanced computer aided design software for product and process design, our the design means and design level have reach the international advanced level. The annual production of high chromium alloy castings is 5000 tons, and the whole pump is 6000 sets. The main products are AH(R), M(R), HH, L, G, SP(R), F, ZGB, ZJ, etc. The diameter range is 25-1200mm, the flow is 5-30000m<sup>3</sup>/h, and the head is 5-110m. The main materials of our products include high chromium wear-resistant white cast iron, low carbon and high chromium wear resistant and corrosion resistant alloy, carbon steel, stainless steel, duplex stainless steel, ball grinding cast iron, gray iron and so on. We can also provide pumps and spare parts for natural rubber and synthetic rubber material.

In addition to the above products, our company undertakes the customized processing service (OEM), and has been working with many foreign companies, providing wear-resistant castings for internationally famous companies.

With continuous technological innovation and management innovation, Ruite is providing more and more quality products and services to meets the needs of customers.

The company strictly implements the overall quality management system, and has passed the ISO9001:2008GB/T19001-2008 quality management system certification.





## ► 概述 Summary

WN(Q)系列挖泥泵是我公司采用先进的计算机辅助设计，针对疏浚、吹填行业的挖泥船用泵而研发的新型泵。

### 1.整体结构船用性好

WN 型用于舱内，WNQ 型用于水下，满足不同船体结构对泥泵的要求，适用性广。泵的整体采用卧式单级单吸悬臂结构，按与齿轮箱的联接方式分为两种结构，即泵工作部分与齿轮箱合一的形式或泵自带托架与齿轮箱通过联轴器联接的结构。

300WN(Q)~500WN(Q)采用单壳结构，600WN~1000WN 采用双泵壳结构，600WN(Q)~1000WN(Q)采用单泵壳结构，双泵壳结构可以保证舱内泵长期安全可靠的运行。WN(Q)型挖泥泵采用前拆式结构，拆装简单，便于维修更换零部件。叶轮采用多头的梯形螺纹联接，传递扭矩大，装配方便。在轴套后端设有叶轮拆卸环，方便拆卸叶轮。

### 2.挖泥性能优良

通过优化设计，WN(Q)型泥泵具有良好的性能，泥泵的吸上能力强，挖深大，浓度高。WN(Q)型泥泵的流道宽畅，过流性能好。泥泵的性能曲线陡降，对排距的变化有很好的适应性。WN(Q)系列挖泥泵可以通过改变叶轮的转速或者改变叶轮的直径实现泵的流量扬程的调整。

### 3.耐磨性能优良，过流件寿命长

WN(Q)型挖泥泵的过流部件采用高强度耐磨合金（KmTBCr26）制作，硬度不小于58HRC，具有很强的具有优良的耐冲击和耐腐蚀性能。

### 4.效率高、效益好

WN(Q)型挖泥泵的水力设计采用 CFD 进行流场模拟，泥泵效率高，同时避免流道内流。速的过快变化对过流部件的局部磨损，降低配件的消耗量，保证了泵的可靠运行，经济效益显著。

WN(Q) series is a new dredge pump developed by our company adopting advanced CAD technology, the dredge pump is widely used in cutter head dredger or other dredging equipments.

### 1. Overall structure apply to dredging

WN model dredge pump is used in cabin, and WNQ pump is used in underwater. It can meet different requirements according to various dredger structure, and has wide applicability. WN dredge pump is horizontal, single-stage, cantilevered structure. It is divided into two structures by the connection with gear box, one type is pump shaft and gear box is rigid connection as a whole, another one type is pump with self-bracket and gear box are connected by coupling.

300WN(Q)~500WN(Q) are single casing structure; 600WN~1000WN are double casing structure; 600WN(Q)~1000WN(Q) are single casing structure. The double casing structure can guarantee long-term safe and reliable running.

WN(Q) type pump adopts front disassembly structure, easy to disassemble and replace parts.

The impeller with multi-head trapezoidal thread connection, has the advantage of large transmission torque and easy assembly. There is a disassembly ring in the back of shaft sleeve, easy to disassemble the impeller.

### 2. Excellent dredging performance

Through optimizing design, WN(Q) dredge pump has excellent performance, it featured at high suction ability, dig deeply, high concentration working. WN(Q) pump has large flow channel, good flow capacity. The pump performance curve drop sharply, can suit different row distance very well. By changing pump speed or impeller diameter, we can adjust the flow capacity and head of WN(Q) dredge pump.

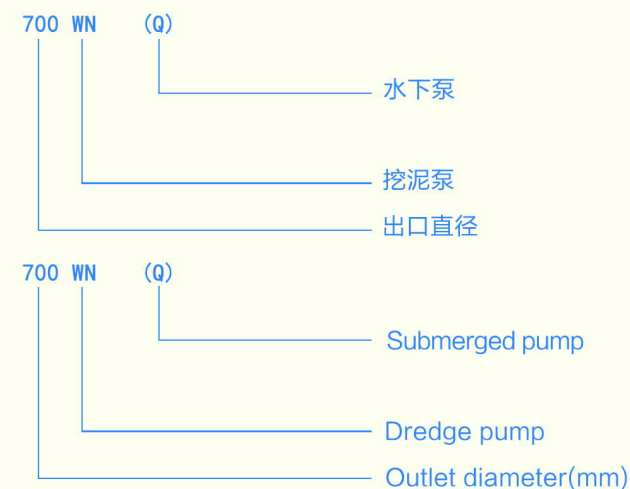
### 3. Hard wear resistance, long wear life

WN(Q) dredge pump wet parts are made of hard wear resistance alloy(KmTBCr26), hardness more than 58HRC, featured at good impact resistance and wear resistance.

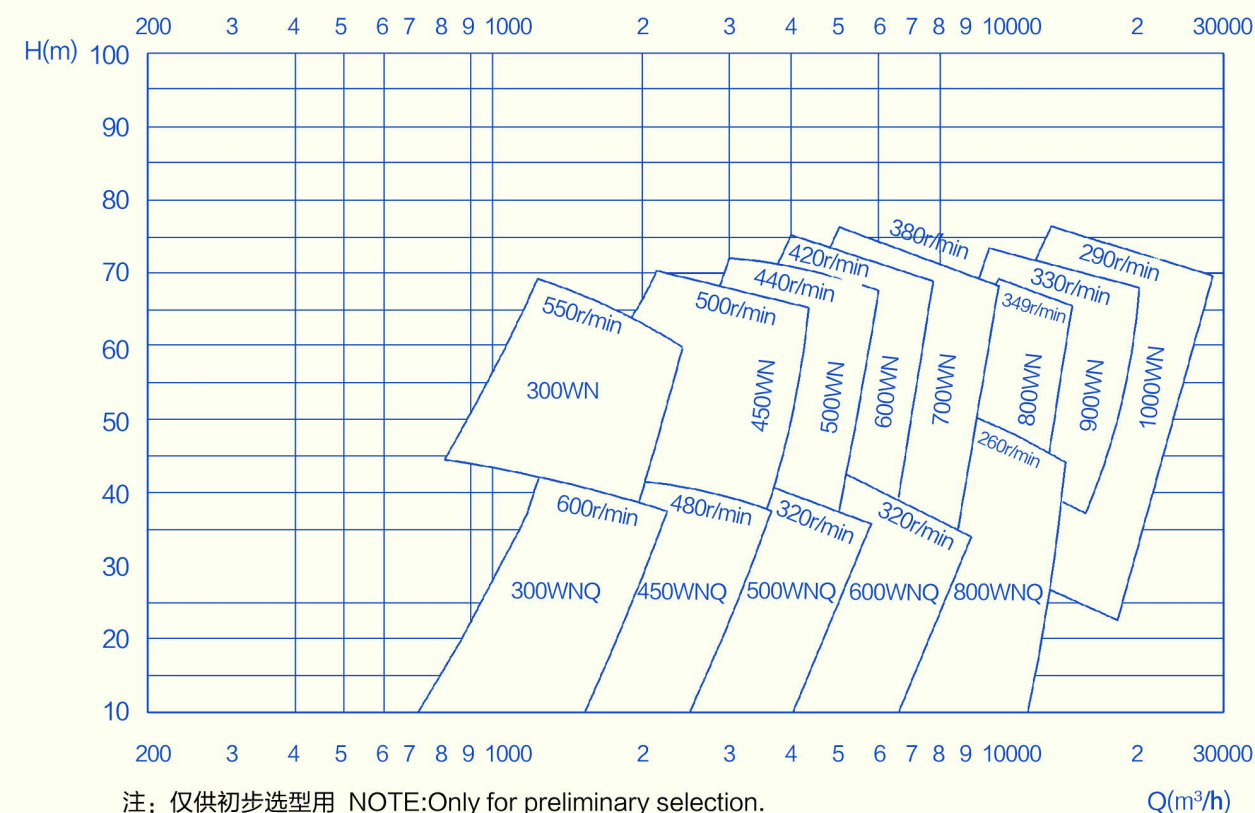
### 4. High efficiency, good benefits

WN(Q) dredge pump hydraulic design adopts CFD to do flow field simulation, high efficiency, meanwhile avoid wet parts localized wear caused by flow speed change rapidly, reduce the consumption of spare parts, guarantee pump reliable running and has remarkable economic benefits.

## ► 型号意义 Model Meaning



## ► WN(Q)系列挖泥泵型谱图 Selection Chart of WN(Q) Type Dredge Pump





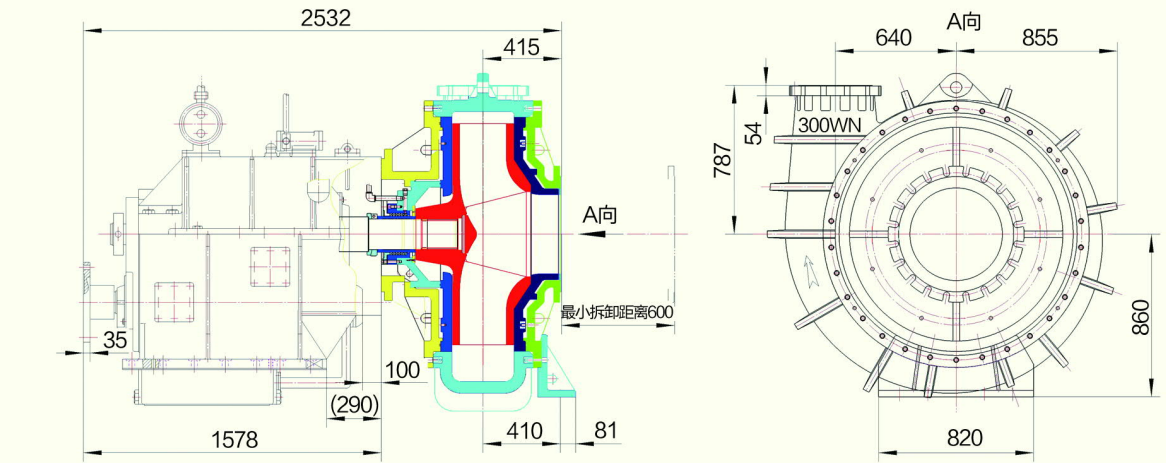
WN series dredger pump

型号 TYPE	流量 CAPACITY (m³/h)	扬程 HEAD (m)	转速 SPEED (rpm)	效率 EFFICIENCY (%)	汽蚀余量 NPSHr (m)	进口直径 INLET DIAMETER (mm)	出口直径 OUTLET DIAMETER (mm)	最大过流粒径 MAX. DIAMETER OF FLOWD PARTICLE (mm)
300WN (QQ)	1800-2200	20-65	300-550	70-78	<4	350	300	240
450WN (Q)	3200-3800	20-67	250-550	70-78	<4.5	600	450	240
500WN (Q)	4500-5800	20-65	250-550	74-80	<4.5	650	500	240
600WN (Q)	5000-7000	20-650	250-550	74-80	<4.5	660	600	250
650WN (Q)	6000-9000	20-70	200-400	75-85	<5.5	700	650	260
700WN (Q)	7500-1200	20-75	200-400	78-85	<5.5	760	700	280
800WN (Q)	10000-15000	20-78	200-380	80-84	<6	900	800	300
900WN (Q)	12000-19000	20-75	180-350	80-85	<6	960	900	320
1000WN (Q)	16000-25000	20-78	180-350	80-85	<6	1000	1000	350

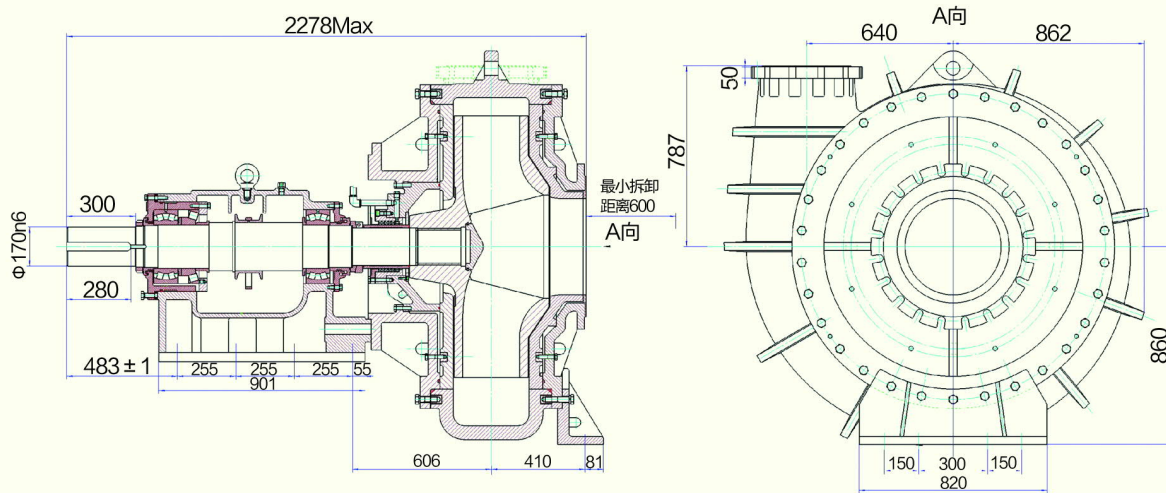
注：仅供初步选型  
NOTE:F or preliminary selection only

外形尺寸 Shape size diagram

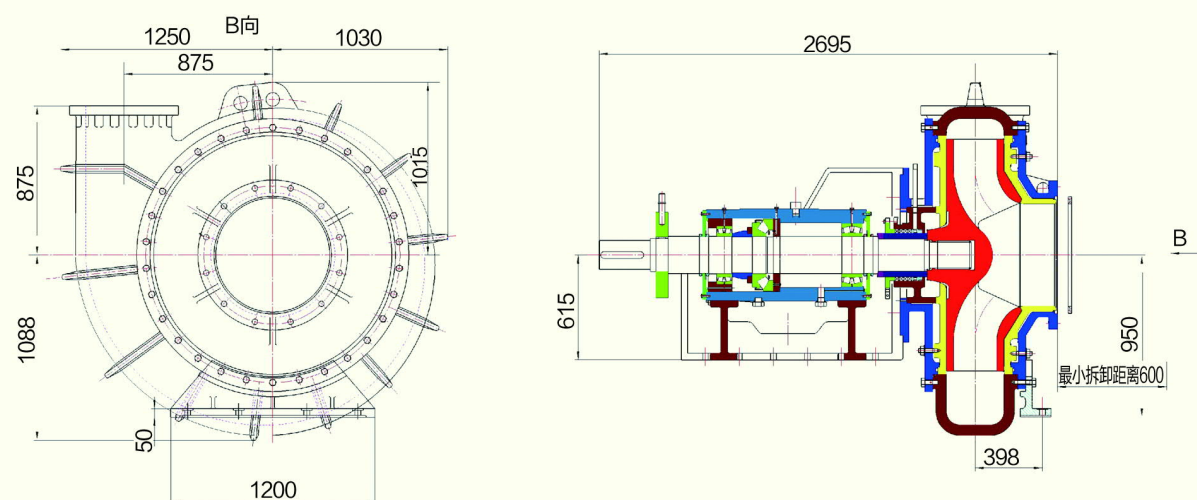
0WN 泵箱合一外形尺寸图  
300WN pump with gear box overall dimension



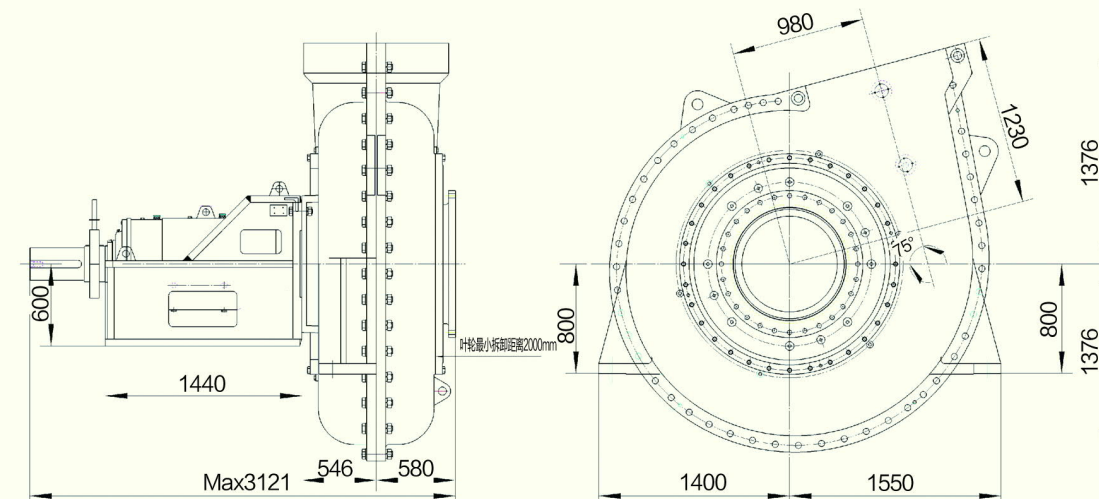
300WN 自带托架外形尺寸图  
300WN pump with support base overall dimension



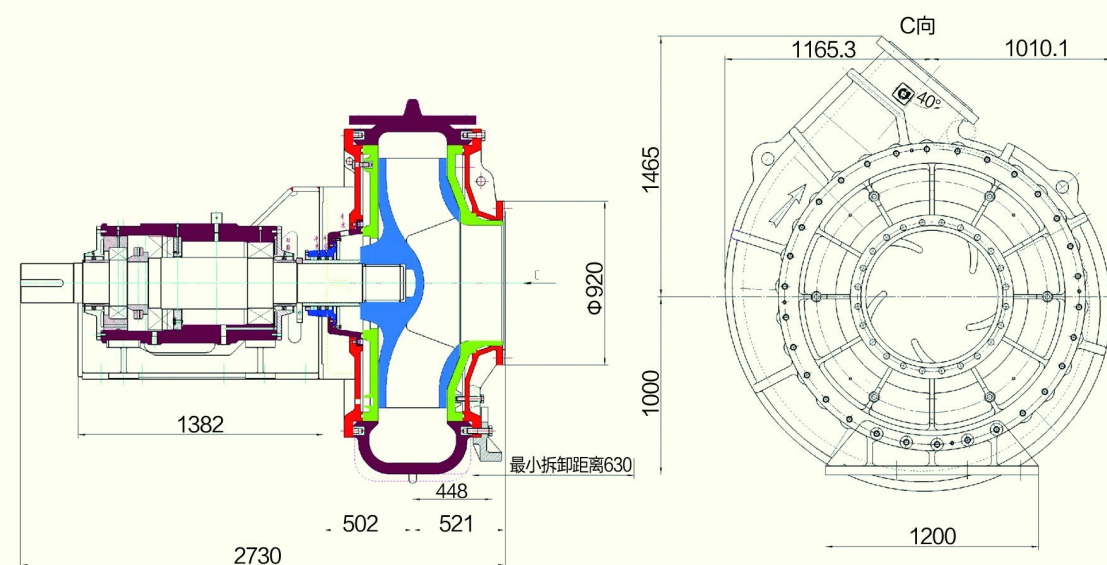
450WN 自带托架外形尺寸图  
450WN pump with support base overall dimension



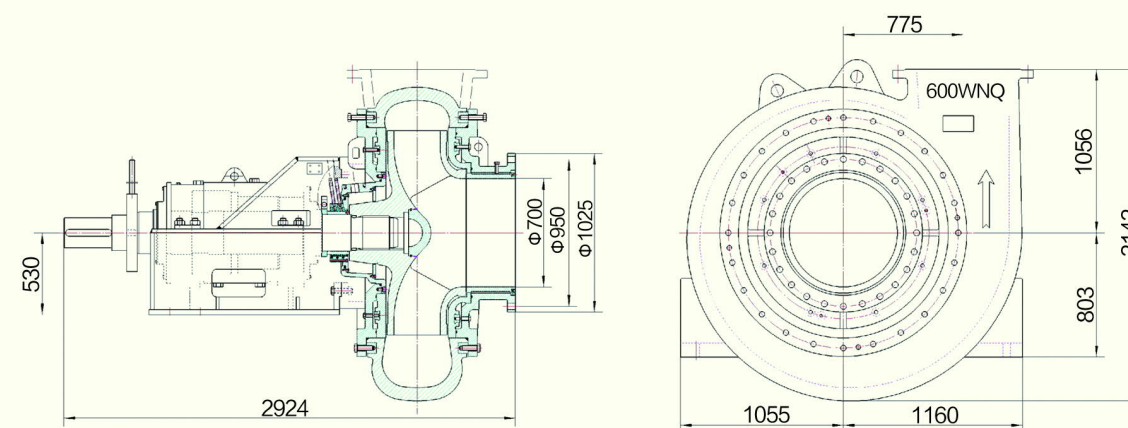
600WN 自带托架外形尺寸图  
600WN pump with support base overall dimension



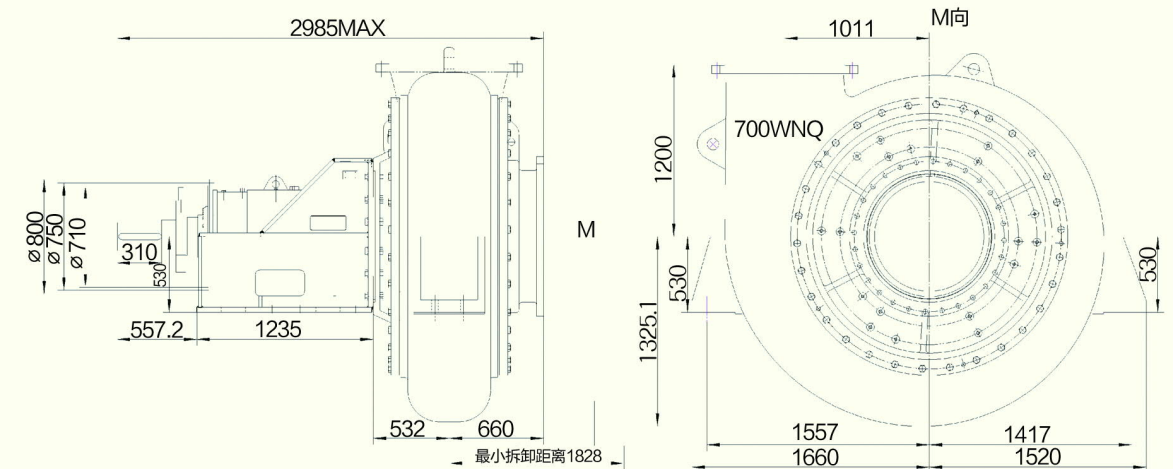
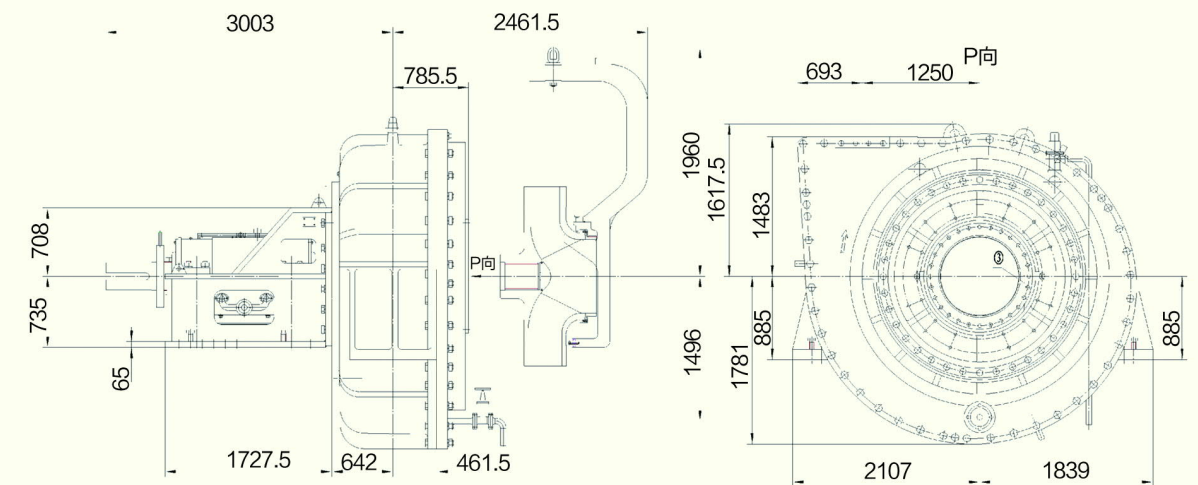
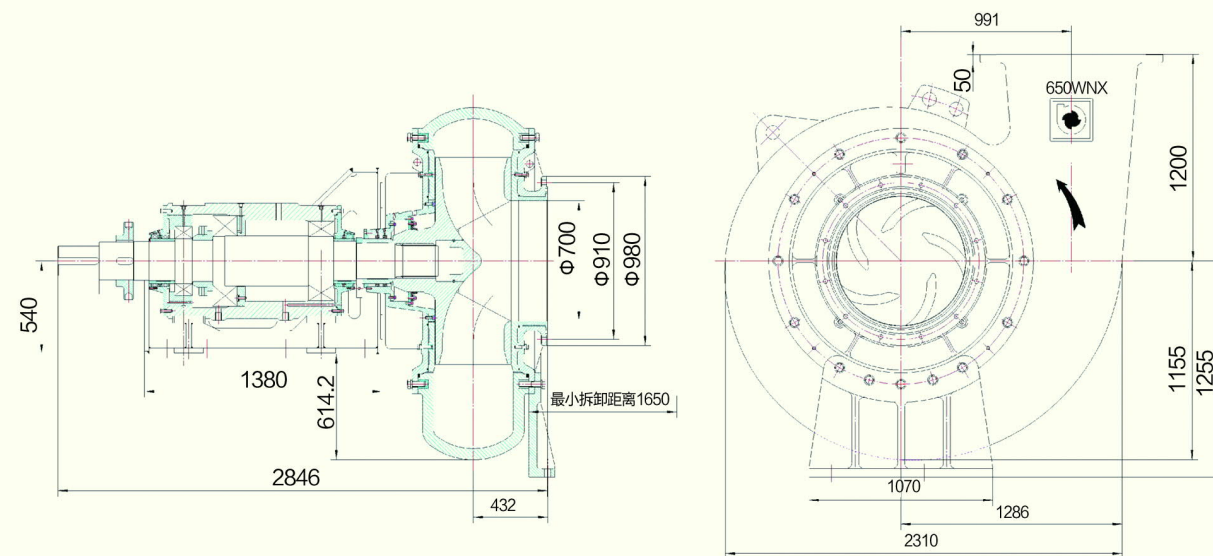
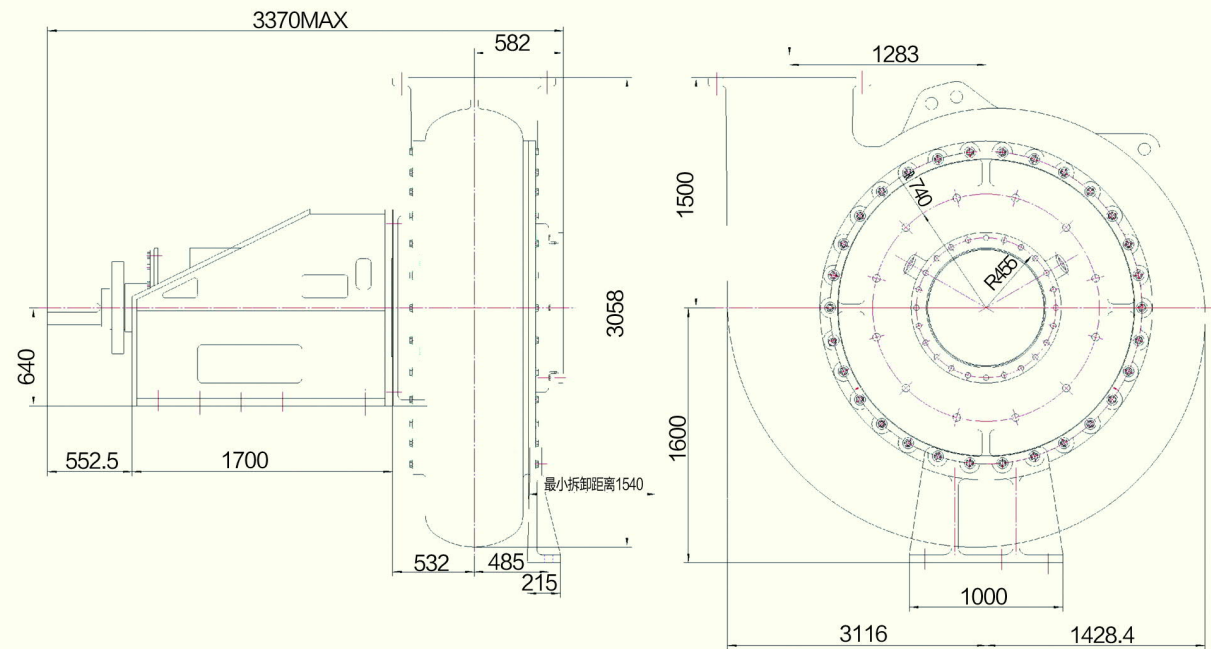
500WN 自带托架外形尺寸图  
500WN pump with support base overall dimension



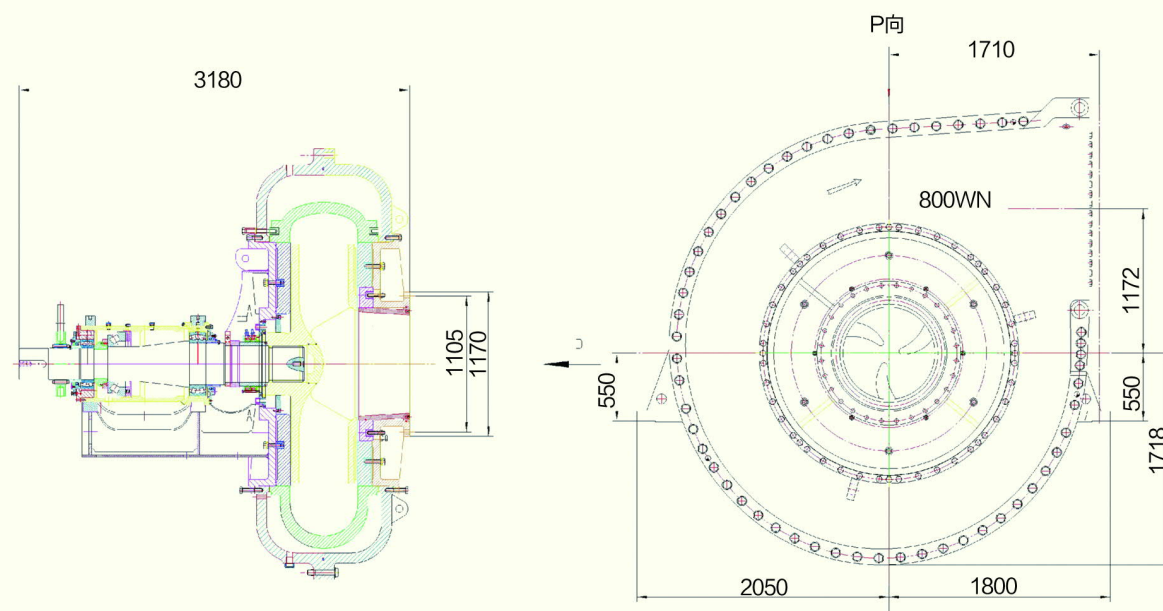
600WNQ 自带托架外形尺寸图  
600WNQ pump with support base overall dimension



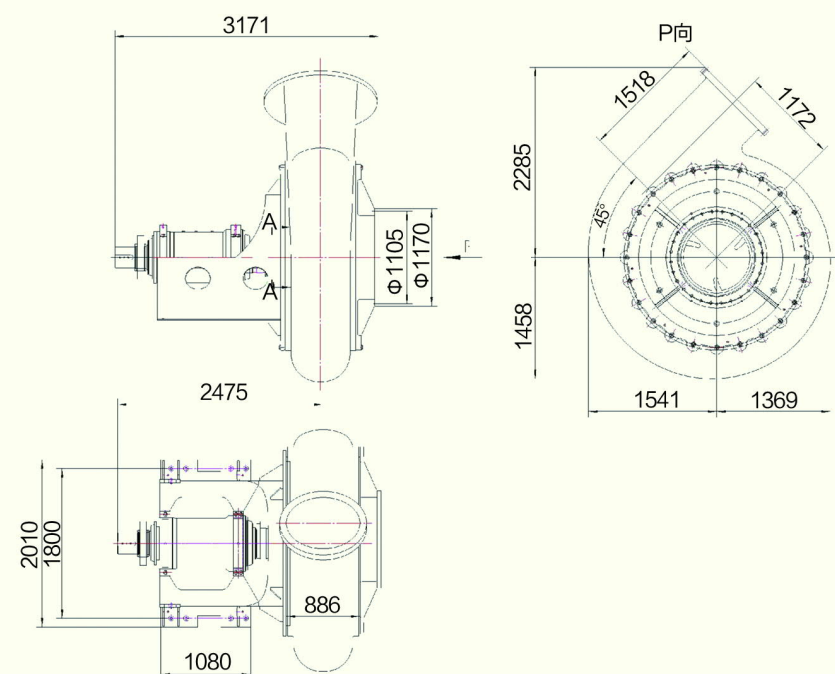




800WN 自带托架外形尺寸图  
800WN pump with support base overall dimension



500WN 自带托架外形尺寸图  
500WN pump with support base overall dimension



产品 Product

